

Original BMW Parts and Accessories. Installation Instructions.



M Performance Silencer System Retrofit Kit.

BMW X5 40i US (G05, G05 LCI)

BMW X6 40i US (G06, G06 LCI)

Retrofit kit number

18 30 2 458 780	M Performance silencer system
18 30 2 458 787	Rear silencer
18 30 2 459 930	Adapter
18 30 2 458 786	Front pipe
18 30 5 A87 F45	M Performance silencer system (G05 LCI, G06 LCI after 04/2023)
18 30 5 A87 F46	Rear silencer (G05 LCI, G06 LCI after 04/2023)

Installation time

The installation time is **approx. 1.0 hour**. This may vary depending on the condition of the vehicle and the equipment in it.

Important information

These installation instructions are primarily designed for use within the BMW dealership organisation and by authorised BMW service companies.

These installation instructions are intended for use by qualified specialist staff trained on BMW cars with the relevant expert knowledge.

All work must be completed using the latest BMW repair manuals, wiring diagrams, servicing manuals and work instructions, in a logical order, using the prescribed tools (special tools), and observing current health and safety regulations.

If you experience installation or functional problems, restrict troubleshooting to approx. 0.5 hours for mechanical work and 1.0 hour for electrical work.

To avoid unnecessary extra work and/or costs, please send an inquiry to the technical parts support team.

Quote the following information:

- VIN,
- retrofit kit part number,
- a detailed description of the problem,
- any work already carried out.

Please do not archive the printout of these installation instructions. The current version can be found in the EPC.

Pictograms



Denotes instructions that draw your attention to dangers.



Denotes instructions that draw your attention to special features.



Denotes the end of the instruction or warning text.

Installation information

Some of the installation is shown only on the left-hand side of the car; proceed in the same way on the right-hand side of the car.

All illustrations show LHD cars; proceed in the same way on RHD cars.



The exhaust system must be pushed right to the front so that it does not make contact at the rear when it is hot. ◀

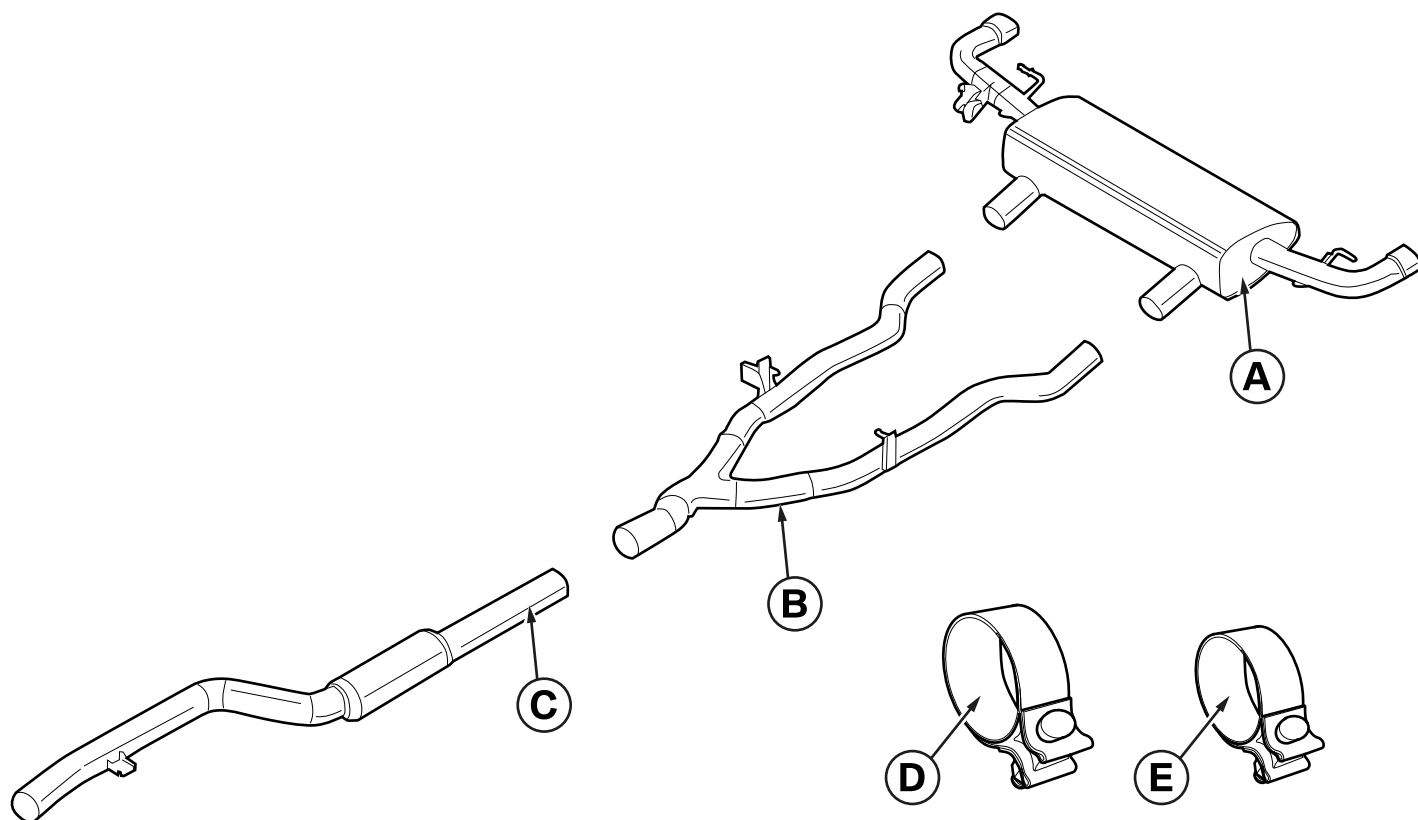
Special tools required

None

Table of contents

Section	Page
1. M Performance silencer system parts list	4
2. Preparations	5
3. Installing the M Performance silencer system	6
4. Teaching Electric Exhaust Valve (for G05 LCI and G06 LCI after 04/2023 only)	7

1. M Performance silencer system parts list



G05 0045 V

Legend

- A** Rear silencer
- B** Adapter
- C** Front pipe
- D** Front clamp 80.0 mm (2 x)
- E** Rear clamp 73.2 mm (2 x)

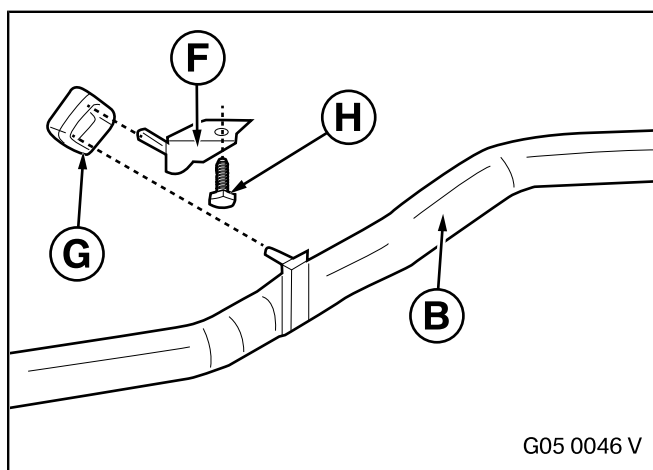
The following components are only required if the sport exhaust system (SA 1MA) is not installed:

- F** Exhaust system bracket (Part No. 18 30 7 935 435)
- G** Rubber mount (Part No. 18 30 8 631 988)
- H** Hexagon head screw (Part No. 18 30 9 909 376)

2. Preparations

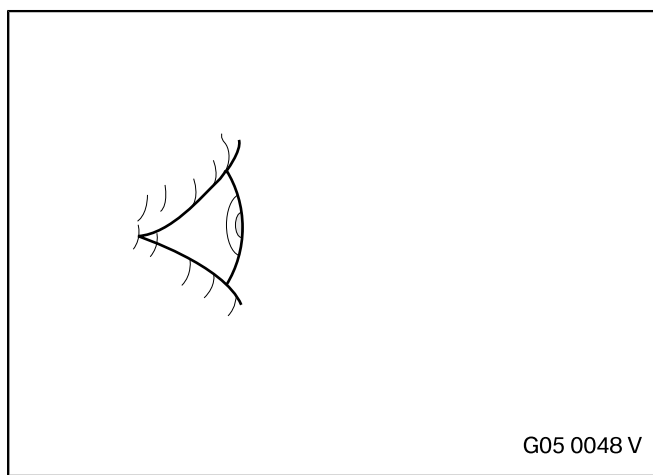
	ISTA/AIR No.
The following components must be removed first of all	
Entire exhaust system	REP-REP-P-1800018-G05_B58 - V.4

3. Installing the M Performance silencer system



Only for cars without the sport exhaust system (SA 1MA)


Before installation, install the exhaust system bracket **F** including rubber mount **G** on the left-hand side of the adapter **B**. Use the standard exhaust system on the right-hand side.



For all cars

Install the silencer system as described in **ISTA/AIR REP-REP-P-1800018-G05_B58 - V.4**.

Secure the clamps **D** using a torque of **55 Nm**.

 The exhaust system must be pushed right to the front so that it does not make contact at the rear when it is hot. ◀

4. Teaching Electric Exhaust Valve (for G05 LCI and G06 LCI after 04/2023 only)

Run the service function in the ISSS using the following path:

- Drive system
- Engine electronics
- Adjustment programs
- Teach exhaust valve/Move into installation position
- Teach electric actuators